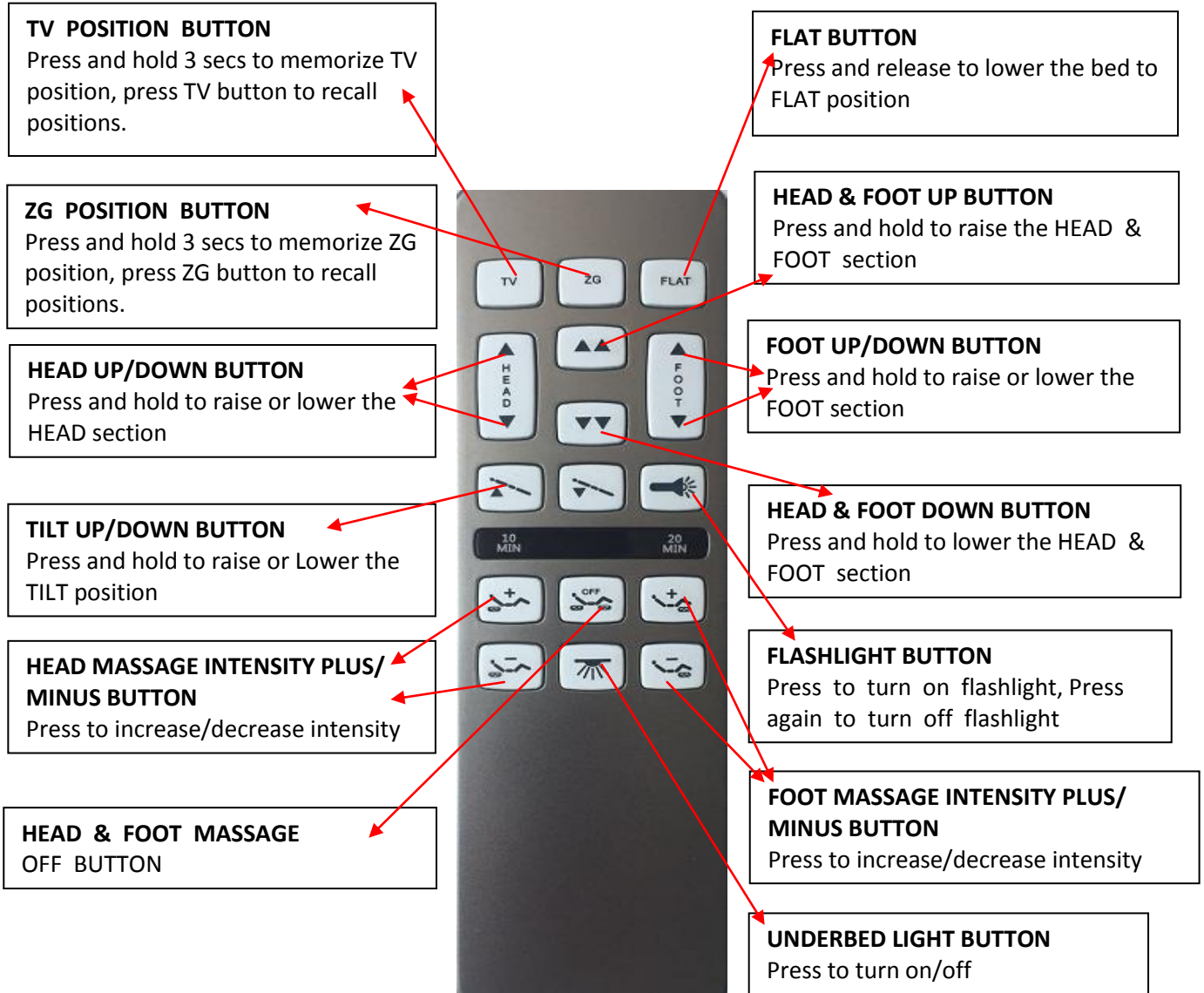


4.operation

REMOTE control function



5: TROUBLE SHOOTING:

5.1: If the bed does not operate at all.

Double check to make sure the bed is plugged into an active household outlet. The green indicator light on the power supply box should be on. If the light is not on, then the bed is not receiving power. Double-check all connections and make sure the bed is plugged into a working power outlet.

5.2: A single function does not operate.

Double check all cable and wiring to ensure everything is firmly connected as shown in Fig. 5.

5.3: The hand control does not work.

Double check to make sure the protective plastic strip has been removed from the batteries as described in 3.4. If the hand control does not light up when any button is pressed, the batteries need replacing. Replace the batteries with 2 AAA. Open the battery compartment and replace batteries maintaining the polarity as indicated.

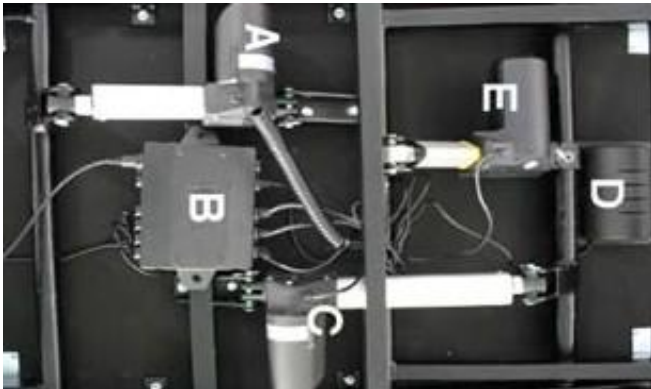


Fig.5.1 Electrical components

- (A) Foot rest motor
- (B) Control box
- (C) Back rest motor
- (D) Massage motor (head end, foot end not shown)
- (E) Tilt Motor

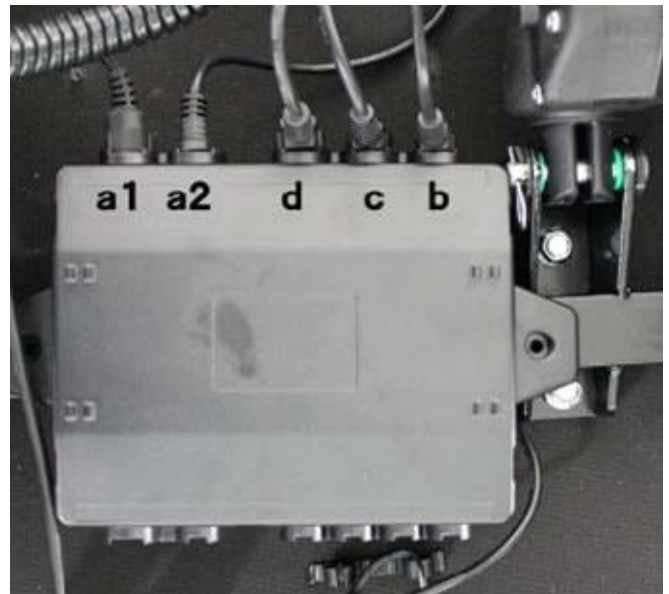


Fig.5.2 Control Box (B)

- (a1) cable connection massage motor foot end
- (a2) cable connection massage motor head end
- (b) Plug back rest motor
- (c) Plug foot rest motor
- (d) Plug bed lift motor (optional)

Please note that all cable connections must be secured with plastic clips to prevent the connections from going loose. For demonstration purposes, Fig. 5.2 shows the connection (a1) without and (a2) with the plastic clip.



The team from Ergo-Pedic would like to thank you for
your purchase of our Patent US 9642 757 B2 Tilt-3 Power
Adjustable Foundation.

M.B. & G. MARKETING
P.O. BOX 2787 INDIO, CA. 92202, U.S.A.
TOLL FREE SERVICE: 844-347-7322
WWW.ERGOPEDIC.NET